

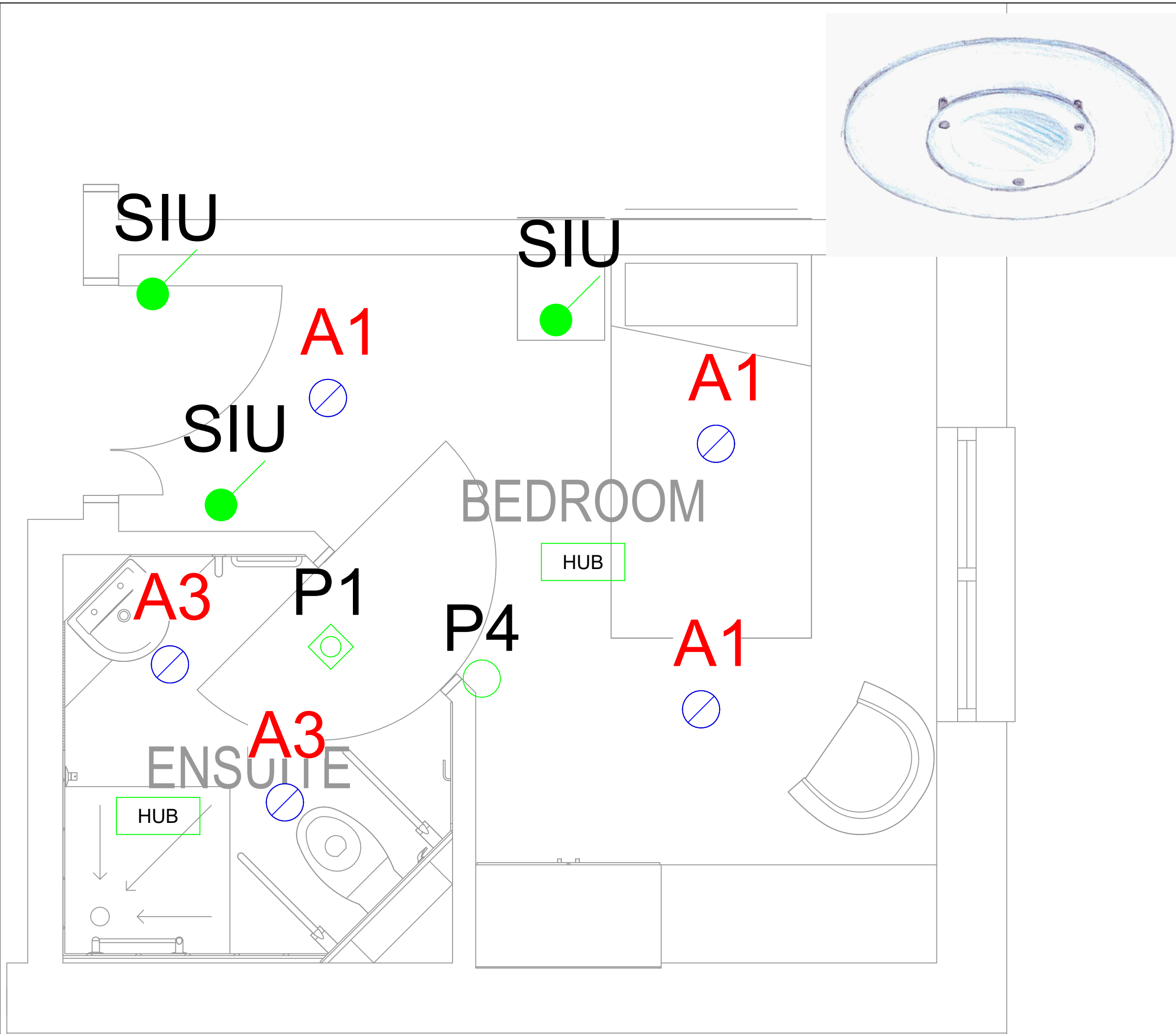
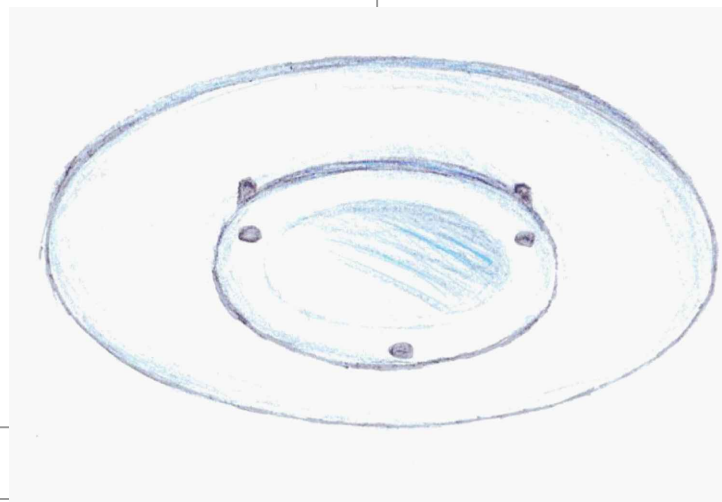
**CDM 2015 - Designers Risk Assessment**

The following information is provided in accordance with Regulation 9 of the Construction (Design Management) Regulations 2015:

- No unusual or significant risks have been identified.
- Installation of electrical services to lighting, contractor to prepare appropriate Risk assessment and method statements to establish safe method of works.
- Installation of lighting may involve working at height, contractor to prepare appropriate Risk assessment and method statements to establish safe method of works.
- Product specific Installation instructions should be adhered to, in order to ensure compliance with the requirements of BS EN 60598 with regards to electrical and mechanical safety of the luminaire.
- Refer to the Principal Designer for any project specific Health & Safety information.

**GENERAL NOTES:**

1. Do not scale from this drawing.
2. All dimensions are in millimeters unless otherwise noted.
3. All dimensions are to be confirmed.
4. This drawing does not necessarily contain all the required information required to communicate the overall design intent or construction detail - therefore drawings should be read in conjunction with all other relevant documentation and specifications.
5. Any apparent errors or differences shall be brought to the attention of Whitecroft Lighting as soon as practicable.



Ref	Description	Mounting Type
A1	Mirage LED Tunable white, with decorative drop ring attachment	1800lm LED
A3	Mirage LED Tunable white, with IP64 opal disc attachment	1800lm LED
P1	ACONREPIR - Recessed mains powered wireless detector for use with Air Control System (presence or absence)	Recessed
P4	COPD - Compact PIR presence detector. Mains powered for use with Air Control System.	Wall
SIU	ACONSIU - 4 Channel push button switch interface for use with Air Control System.	-
HUB	ACONYCU - Remote installation unit for wired connection to up to 10 DALI luminaires. Connects wirelessly to other Air Control devices.	-

Rev	Description	Date	By

Whitecroft Lighting Ltd  
 Burlington Street  
 Ashton-under-Lyne  
 Lancashire  
 OL7 0AX  
 United Kingdom

T: +44 (0)161 330 6811  
 F: +44 (0)161 331 5855  
 E: email@whitecroflight.com

**Whitecroft lighting**

www.whitecroflighting.com

Project Name: **Parkhaven Trust**

Drawing Name: **TYPICAL BEDROOM LIGHTING & CONTROLS**

Drawn by: TB	Checked by: N/A	Date: AUGUST 2020	Scale: 1/20 @ A3
-----------------	--------------------	----------------------	---------------------

Drawing No.: **20690 - DWG - XX - XX**      Revision: **R0**

Project No.	Type	Floor/Loc.	Sequence
-------------	------	------------	----------